



COMERCIO  
CATÁLOGO GENERAL 2024

**DNK**  
**DYNEKE**



Desde Dyneke trabajamos día a día para lograr la excelencia en nuestro producto final así como en todo el proceso de fabricación.

En este catálogo encontrarás todas las prendas que hemos diseñado con mimo y delicadeza para que en tu negocio vistas con elegancia, glamour y distinción.

**La calidad, la innovación, el trabajo en equipo** y el **diseño** son nuestros valores principales.

Utilizamos materias primas que ofrecen la mayor **calidad** apostando por la **innovación** y el uso de las nuevas tecnologías en todos los sectores de la empresa.

El **trabajo en equipo** es muy importante para llevar a cabo nuestros proyectos de manera coordinada y coherente. Para ello contamos con un equipo de profesionales diverso y exigente dentro de cada ámbito y departamento.

En cuanto al **diseño** de nuestros productos, nos basamos en las últimas tendencias de moda haciendo que nuestros usuarios puedan lucir prendas originales y exclusivas.

¡Descubre nuestra colección de prendas y complementos para vestir a los mejores profesionales!



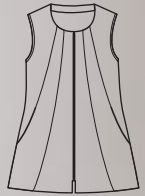




# COMERCIO

[www.dyneke.com](http://www.dyneke.com)

8269571



8269

Casaca sin mangas y cremallera central en microfibra. Sleeveless jacket with zipper in microfiber.

- 570 Blanco · White
- 571 Negro · Black
- 572 Fucsia · Fuchsia
- 573 Pistacho · Pistachio

Microfibra (100% Pol.)  
150 gr/m<sup>2</sup>



Largo/length: 74 cm  
Talla/Size: SP-XG/XS-XXXL



82695573



8269572

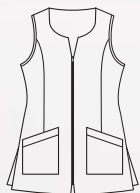


8269570





8292487



8292

Casaca básica sin mangas y cremallera central. Basic sleeveless jacket with central zipper.

487 Lila · Purple  
Microfibra (100% Pol.)  
150 gr/m<sup>2</sup>



573 Pistacho · Pistachio  
100% Pol./Poly.  
150 gr/m<sup>2</sup>



900 Blanco · White  
67% Pol./ Poly. · 33% Algod./Cotton  
195 gr/m<sup>2</sup>



725 Negro · Black  
768 Fucsia · Fucsia  
100% Pol./Poly.  
165 gr/m<sup>2</sup>



Largo/length: 73 cm  
Talla/Size: SP-XG/XS-XXXL



8292900



8292725



8292573

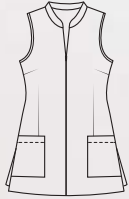


8292768





80699572



8069

Casaca cuello alto con cremallera parcial invisible. High neck jacket with invisible partial zipper.

489 Verde manzana · Apple green  
Microfibra (100% Pol.)  
150 gr/m<sup>2</sup>



572 Fucsia · Fuchsia  
Microfibra (100% Pol.)  
150 gr/m<sup>2</sup>



700 Blanco · White  
65% Pol. Poly. · 35% Algod./Cotton  
195 gr/m<sup>2</sup>



725 Negro · Black  
100% Pol. · Poly.  
165 gr/m<sup>2</sup>



Largo/length: 73 cm  
Talla/Size: SP-XG/XS-XXXL



www.dyneke.com



8069700



8069725



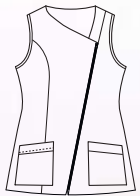
8069572



8069489



8067570



8067

Casaca sin mangas con cremallera diagonal en microfibra.  
Sleeveless jacket with diagonal zipper in microfiber.

482 Azul · Blue  
Microfibra (100% Pol.)  
150 gr/m<sup>2</sup>



568 Malva · Mallow  
570 Blanco · White  
571 Negro · Black

Microfibra (100% Pol.)  
150 gr/m<sup>2</sup>



Largo/length: 69 cm  
Talla/Size: SP-XG/XS-XXXL



8067482



8067568



8067571

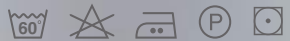


8053700

**8053**

Casaca sin mangas entallada con cremallera. Sleeveless jacket fitted with zipper.

**700** Blanco · White  
65% Pol./Poly. · 35% Algod./Cotton  
195 gr/m<sup>2</sup>



**725** Negro · Black  
100% Pol./Poly.  
165 gr/m<sup>2</sup>



Largo/length: 73 cm  
Talla/Size: SP-XG/XS-XXXL



8053725





8068571



8068

Casaca sin mangas con corchetes cuadrados. Sleeveless jacket with square snaps.

489 Verde Manzana · Apple Green

490 Azul Denim · Denim Blue

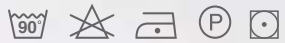
Microfibra (100% Pol.)  
150 gr/m<sup>2</sup>



570 Blanco · White

571 Negro · Black

100% Pol./Poly.  
150 gr/m<sup>2</sup>



Largo/length: 72 cm

Talla/Size: SP-XG/XS-XXXL



8068490



8068489



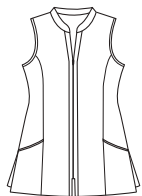
8068570



PORQUE EL ESTILO Y  
LA ELEGANCIA RESIDEN  
EN UNO MISMO, VISTE DNK.

8160570

8160571



8160

Casaca sin mangas de  
microfibra con cremallera.  
Microfiber sleeveless jacket  
with zipper.

570 Blanco · White

571 Negro · Black

Microfibra (100% Pol.)

150 gr/m<sup>2</sup>

Largo/length: 72 cm

Talla/Size: SP-XG/XS-XXXL



8050571



**8050**

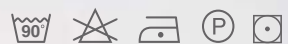
Chaqueta manga corta con corchetes. Short-sleeved jacket with snaps.

487 Lila · Purple  
490 Azul Denim · Denim  
Microfibra (100% Pol.)  
150 gr/m<sup>2</sup>



570 Blanco · White  
571 Negro · Black

Microfibra (100% Pol.)  
150 gr/m<sup>2</sup>



Largo/length: 70 cm  
Talla/Size: SP-XG/XS-XXXL



8050570



8050490



8050487





 MICROFIBRA



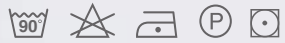
**8059**

Chaqueta manga larga con corchetes. Long-sleeved jacket with snaps fasteners.

570 Blanco · White

571 Negro · Black

Microfibra (100% Pol.)  
150 gr/m<sup>2</sup>



Largo/length: 70 cm

Talla/Size: SP-XG/XS-XXXL



8059570



8059571



[www.dyneke.com](http://www.dyneke.com)

Chaquetas lisas

 SARGA

8274700



**8274**

Chaqueta manga larga con corchetes. Long-sleeved jacket with snaps fasteners.

700 Blanco · White

65% Pol./Poly. · 35% Algod./Cotton  
195 gr/m<sup>2</sup>



Largo/length: 70 cm

Talla/Size: SP-XG/XS-XXXL



8270

Chaqueta mujer manga corta con corchetes. Women's jacket short sleeves with snap fasteners.



700 Blanco · White  
65% Pol. Poly. · 35% Algod./Cotton  
195 gr/m<sup>2</sup>



725 Negro · Black  
100% Pol./Poly.  
165 gr/m<sup>2</sup>



Largo/length: 70 cm  
Talla/Size: SP-XG/XS-XXXL

8270700  
✓ SARGA



8270725



8673568



8673

Chaqueta manga corta con vivo. Short-sleeved jacket with piping.

482 Azul · Blue  
Microfibra (100% Pol.)  
150 gr/m<sup>2</sup>



568 Malva · Mallow  
Microfibra (100% Pol.)  
150 gr/m<sup>2</sup>



Largo/length: 73 cm  
Talla/Size: SP-XG/XS-XXXL

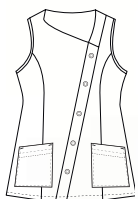


8673482



8041700

8041569



**8041**

Casaca sin mangas con corchetes en diagonal. Sleeveless jacket with diagonal snap fasteners.

700 Blanco · White  
65% Pol. Poly. · 35% Algod./Cotton  
195 gr/m<sup>2</sup>



569 Beige · Beige  
Microfibra (100% Pol.)  
150 gr/m<sup>2</sup>



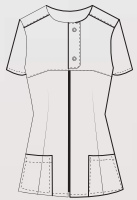
Largo/length: 63 cm  
Talla/Size: SP-XG/XS-XXXL







806570



8065

Chaqueta, corchetes y cremallera. Jacket, snap and zipper.

570 Blanco · White

571 Negro · Black

Microfibra (100% Pol.)  
150 gr/m<sup>2</sup>



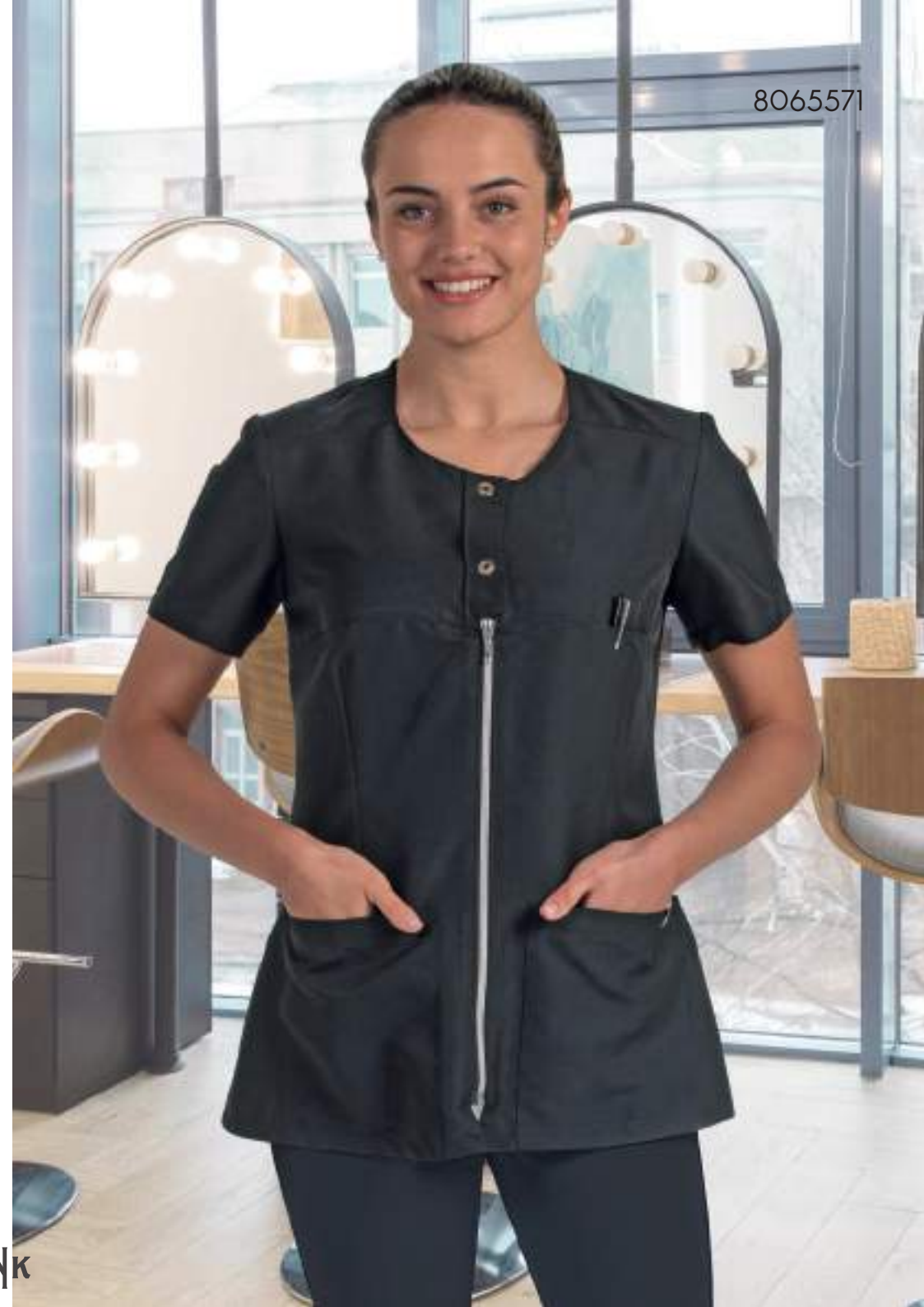
Largo/length: 70 cm

Talla/Size: SP-XG/XS-XXXL



www.dyneke.com

806571



8051571



8066571



8066570

8051570



8066



8051

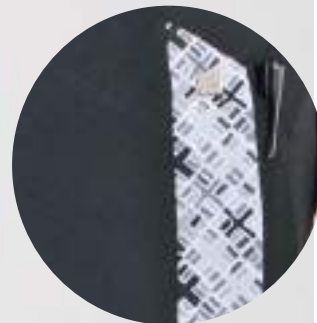
Chaqueta mujer m/ corta, corchetes en tapeta. Women's jacket, short sleeves, snap on the placket.

570 Blanco · White

571 Negro · Black  
Microfibra (100% Pol.)  
150 gr/m<sup>2</sup>

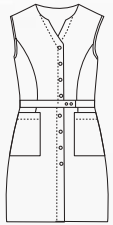


Largo/length: 74 cm  
Talla/Size: SP-XG/XS-XXXL



www.dyneke.com

8093487



8093

Bata larga mujer, sin mangas, detalle cintura. Women's long coat, sleeveless, waist detail.

487 Lila · Purple

489 Verde Manzana · Apple Green

Microfibra (100% Pol.)

150 gr/m<sup>2</sup>



700 Blanco · White

65% Pol. Poly. · 35% Algod./Cotton

195 gr/m<sup>2</sup>



Largo/length: 90 cm

Talla/Size: SP-XG/XS-XXXL



8093700



8093489





8081571

**8081**

Levita manga corta contraste en solapa. Contrast lapel frock coat, short sleeves.

570 Blanco · White

571 Negro · Black

Microfibra (100% Pol.)  
150 gr/m<sup>2</sup>



Largo/length: 79 cm

Talla/Size: SP-XG/XS-XXXL



[www.dyneke.com](http://www.dyneke.com)

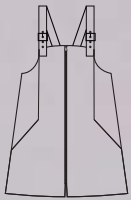
8081570



8136725



Tirantes de polipiel · Leatherette strap.



8136

Pichi hebilla estampado animal print. Animal print buckle pinafore dress.

725 Negro · Black

100% Pol./Poly.  
165 gr/m<sup>2</sup>



Largo/length: 75 cm  
Talla/Size: SP-XG/XS-XXXL





8698497

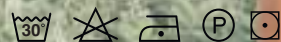


8698

Casaca denim sin mangas  
estampado margaritas.  
Sleeveless daisy print denim  
jacket.

497 Tejano · Denim

78% Pol./Poly.  
18% Rayon  
4% Elastan  
235 gr/m<sup>2</sup>



Largo/length: 68 cm  
Talla/Size: SP-XG/XS-XXXL



8601724



8601

Casaca mariposa con cremallera.  
Sleeveless jacket butterfly with zipper.

724 Azul marino · Navy

100% Pol./Poly.  
165 gr/m<sup>2</sup>



Largo/length: 69 cm  
Talla/Size: SP-XG/XS-XXXL





8632766



**8632**

Casaca sin mangas  
estampado flor con  
corchetes. Flower print  
sleeveless jacket with snaps.

727 Azul · Blue

766 Rojo · Red

100% Pol./Poly.

165 gr/m<sup>2</sup>



Largo/length: 68 cm

Talla/Size: SP-XG/XS-XXXL



8632727





8610725

**8610**

Casaca sin mangas estampado león con cremallera. Lion print sleeveless jacket with zipper.

725 Negro · Black

100% Pol./Poly.  
165 gr/m<sup>2</sup>



Largo/length: 66 cm  
Talla/Size: SP-XG/XS-XXXL



8699725

**8699**

Casaca sin mangas estampado círculos rojos. Red circle print sleeveless jacket.

725 Negro · Black

100% Pol./Poly.  
165 gr/m<sup>2</sup>



Largo/length: 72 cm  
Talla/Size: SP-XG/XS-XXXL





8638725



8638

Casaca sin mangas estampado hipster. Sleeveless hipster print jacket.

725 Negro/Turquesa · Black/Turquoise

720 Negro/Fucsia · Black/Fuchsia

100% Pol./Poly.  
165 gr/m<sup>2</sup>



Largo/length: 70 cm  
Talla/Size: SP-XG/XS-XXXL

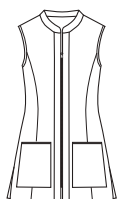


8638720





8162571



8162

Casaca sin mangas estampado camuflaje con cremallera.  
Camouflage print microfiber sleeveless jacket with zipper.

571 Negro · Black

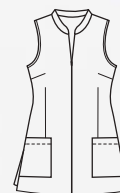
Microfibra (100% Pol.)  
150 gr/m<sup>2</sup>



Largo/length: 72 cm  
Talla/Size: SP-XG/XS-XXXL



8602725



8602

Casaca sin mangas estampado animal print, cremallera invisible.  
Animal print sleeveless jacket with invisible zipper.

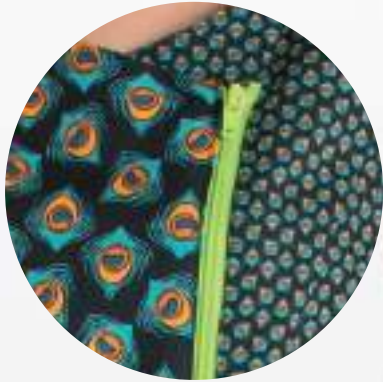
725 Negro · Black

100% Pol./Poly.  
165 gr/m<sup>2</sup>



Largo/length: 73 cm  
Talla/Size: SP-XG/XS-XXXL





8696725

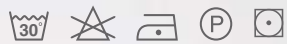


**8696**

Casaca sin mangas estampado con cremallera. Peacock print sleeveless jacket.

725 Negro · Black

100% Pol./Poly.  
165 gr/m<sup>2</sup>



Largo/length: 67 cm  
Talla/Size: SP-XG/XS-XXXL



8639725



**8639**

Casaca sin mangas estampado hello con cremallera. Hello print sleeveless jacket with front zipper.

725 Negro · Black

100% Pol./Poly.  
165 gr/m<sup>2</sup>

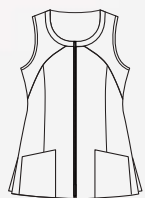


Largo/length: 67 cm  
Talla/Size: SP-XG/XS-XXXL





8034571

**8034**

Casaca sin mangas estampado cebra con cremallera. Sleeveless jacket in zebra print with zipper.

571 Negro · Black

Microfibra (100% Pol.)  
150 gr/m<sup>2</sup>



Largo/length: 72 cm  
Talla/Size: SP-XG/XS-XXXL



8035571

**8035**

Casaca sin mangas de microfibra estampado huellas. Sleeveless microfiber jacket with print print.

571 Negro · Black

Microfibra (100% Pol.)  
150 gr/m<sup>2</sup>



Largo/length: 72 cm  
Talla/Size: SP-XG/XS-XXXL





8648725



**8648**

Casaca sin mangas estampado animal. Animal print sleeveless jacket.

725 Negro · Black

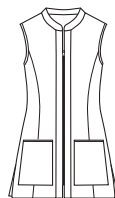
100% Pol./Poly.  
165 gr/m<sup>2</sup>



Largo/length: 70 cm  
Talla/Size: SP-XG/XS-XXXL



8161571



**8161**

Casaca sin mangas estampado acuarela. Sleeveless jacket in watercolor print.

571 Negro · Black

Microfibra (100% Pol.)  
150 gr/m<sup>2</sup>



Largo/length: 72 cm  
Talla/Size: SP-XG/XS-XXXL



8605725

**8605**

Estola estampado flor diente de león. Dandelion flower print stole.

725 Negro · Black

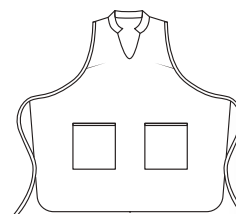
100% Pol./Poly.  
165 gr/m<sup>2</sup>



Largo/length: 79 cm  
Talla/Size: Única · Unic



8156725

**8156**

Estola estampado acuarela con cintas. Purple watercolor print stole.

725 Negro · Black

100% Pol./Poly.  
165 gr/m<sup>2</sup>



Largo/length: 82 cm  
Talla/Size: Única · Unic







8113

Camiseta punto con bolsillos metalizados, manga 3/4.  
Knitted t-shirt with 3/4 sleeve metallic pockets.

827 Negro · Black

96% Pol./Poly. · 6% Elastano  
130 gr/m<sup>2</sup>



Largo/length: 69 cm  
Talla/Size: SP-XG/XS-XXXL



DNK, DONDE ELEGANCIA,  
ESTILO Y COMODIDAD  
SE UNEN.

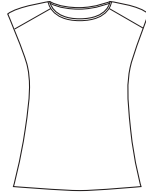
8113827







8115827



### 8115

Camiseta de punto con hombreras en raso negro.  
Knitted t-shirt with black satin shoulder pads.

827 Negro · Black

96% Pol./Poly. · 6% Elastano  
130 gr/m<sup>2</sup>



Largo/length: 60 cm  
Talla/Size: SP-XG/XS-XXXL



8116827



### 8116

Camiseta de punto de manga corta vuelta ranglan. Short-sleeved raglan turn-up knit T-shirt.

827 Negro · Black

96% Pol./Poly. · 6% Elastano  
130 gr/m<sup>2</sup>

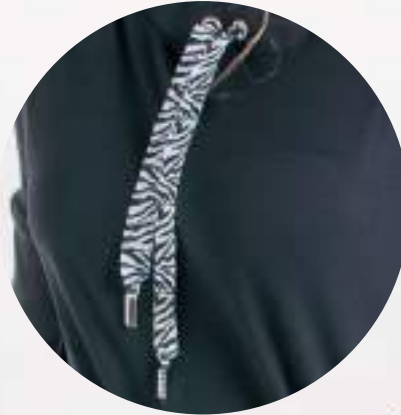


Largo/length: 62 cm  
Talla/Size: SP-XG/XS-XXXL



8117479

▶ POLIAMIDA



### 8117

Camiseta punto con lazo cebra. Knitted t-shirt with zebra bow.

479 Black · Negro

90% Pol./Poly. · 10% Elast.  
205 gr/m<sup>2</sup>



Largo/length: 60 cm  
Talla/Size: SP-XG/XS-XXXL



8109125



**8109**

Vestido camisero con lazo ajustable, manga larga.  
Adjustable tie shirt dress, long sleeves.

125 Negro · Black

97 % Pol./poly. · 3 % Elastano  
160 gr/m<sup>2</sup>



Largo/length: 100 cm  
Talla/Size: SP-XG/ XS-XXXL



8114827



**8114**

Vestido punto con cinturón, trabilla en mangas. Knitted dress with a belt, sleeves with lab.

827 Negro · Black

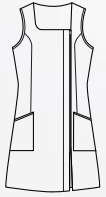
94 % Pol./Poly. · 6 % Elastano  
130 gr/m<sup>2</sup>



Largo/length: 90 cm  
Talla/Size: SP-XG/ XS-XXXL



8047725



8047

Pichi largo con cremallera frontal en lado izquierdo. Long pinafore with front zipper on the left side.

700 Blanco · White  
65% Pol./Poly. · 35% Algod./Cotton  
195 gr/m<sup>2</sup>



725 Negro · Black  
100% Pol./Poly.  
165 gr/m<sup>2</sup>



Largo/length: 90 cm  
Talla/Size: SP-XG/XS-XXXL



8047700



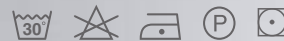
8279725



8279

Casaca sin mangas con corchetes. Sleeveless jacket with snaps.

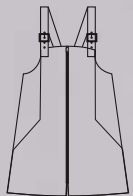
725 Negro · Black  
100% Pol./Poly.  
165 gr/m<sup>2</sup>



Largo/length: 70 cm  
Talla/Size: SP-XG/XS-XXXL







Detalles en polipiel.  
Leatherette details.

8110830

8110

Pichi corto con hebillas y tirantes en polipiel. Short dungarees with buckle and imitation leather straps.

830 Negro · Black

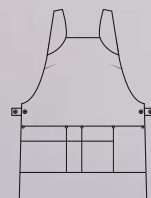
94% Pol./Poly. · 6% Elastano  
225 gr/m<sup>2</sup>



Largo/length: 76 cm  
Talla/Size: SP-XG/XS-XXXL



8111105



8111

Estola peluquería multibolsillos.  
Multi-pocket hairdressing stole.

105 Negro · Black

100% Pol./Poly  
208 gr/m<sup>2</sup>



Largo/length: 78 cm  
Talla/Size: Única · Unic



8101104

**8101**

Kimono peluquería. Hairdresser kimono.

104 Negro · Black

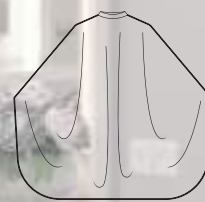
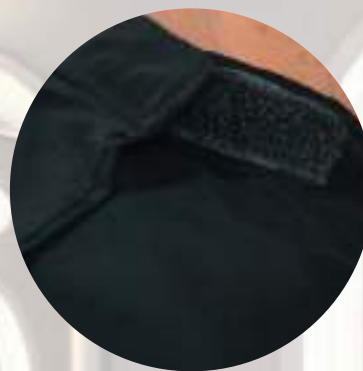
100% Pol./Poly  
122 gr/m<sup>2</sup>



Largo/length: 109 cm  
Talla/Size: Única · Unic



8102104

**8102**

Peinador peluquería. Hairdresser cape.

104 Negro · Black

100% Pol./Poly  
122 gr/m<sup>2</sup>

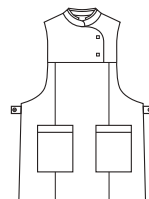


Largo/length: 94 cm  
Talla/Size: Única · Unic

8159570



8159844



8159

Estola comercio cuello mao.  
Multi-pocket stole.

844 Gris · Grey

70% Alg./Coton 30 Pol./Poly  
130 gr/m<sup>2</sup>



570 Blanco · White

571 Negro · Black

100% Pol./Poly  
150 gr/m<sup>2</sup>



Largo/length: 80 cm  
Talla/Size: Única · Unic

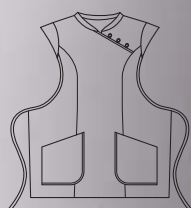


8159571





8470768

**8470**

Estola cuello mao con cintas ajustables traseras. Mandarin collar stole with adjustable back straps.

**700** Blanco · White  
65% Pol. Poly. · 35% Algod./Cotton  
195 gr/m<sup>2</sup>



**725** Negro · Black  
**768** Fucsia · Fucsia  
100% Pol. · Poly.  
165 gr/m<sup>2</sup>



Largo/length: 77 cm  
Talla/Size: Única · Unic



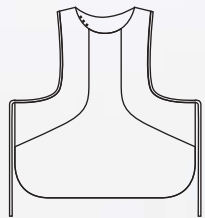
8470700



8470725



8158487



8158

Estola bicolor en microfibra con cintas. Two-tone microfibre stole with ribbons.

487 Lila · Purple  
Microfibra (100% Pol.)  
150 gr/m<sup>2</sup>



567 Rojo/Negro · Rojo/Black

570 Blanco · White

584 Gris · Gray

Microfibra (100% Pol.)  
150 gr/m<sup>2</sup>



Largo/length: 78 cm  
Talla/Size: Única · Unic



8158570



8158584



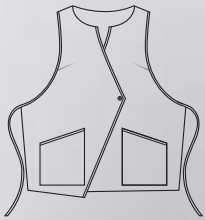
8158567



40

DNK

8480725



**8480**

Estola ángulo con cintas.  
Angled stole with ribbons.

**709** Marrón · Purple

**725** Negro · Black

100% Pol./Poly.

165 gr/m<sup>2</sup>



**844** Gris · Grey

70% Algod./Cotton · 30% Pol./Poly.

130 gr/m<sup>2</sup>



Largo/length: 72 cm

Talla/Size: Única · Unic



8480709



8480844





8025572

¿MONTAJE?



8025

Estola bicolor formas en microfibra con cintas. Two-tone stole shapes in microfiber with ribbons.

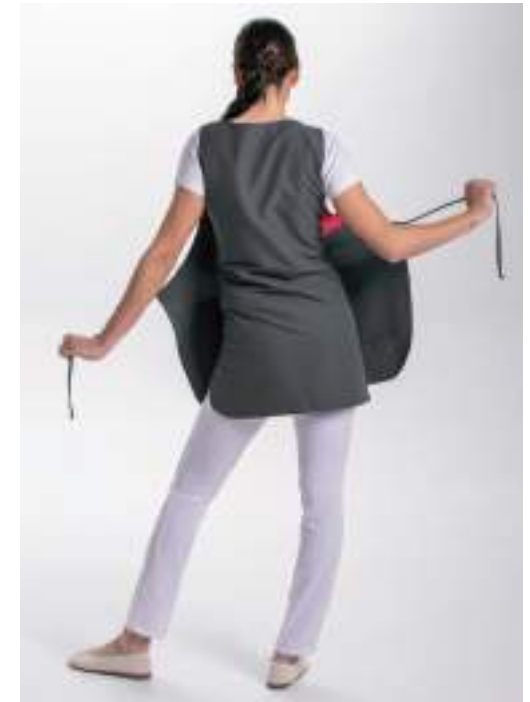
487 Lila · Purple  
Microfibra (100% Pol.)  
150 gr/m<sup>2</sup>



572 Fucsia · Fucsia  
Microfibra (100% Pol.)  
150 gr/m<sup>2</sup>



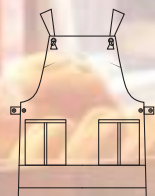
Largo/length: 78 cm  
Talla/Size: Única · Unic



8025487



8474387

**8474**

Estola tejana multiservicios con contrastes y botón. Multi-service denim stole with contrasts and button.

- 387 Marrón · Brown
- 389 Azul · Blue
- 850 Rosa · Pink
- 887 Verde · Green

55% Pol./Poly. · 42% Algod./Cotton  
· 3% Elastano  
180 gr/m<sup>2</sup>



Largo/length: 79 cm  
Talla/Size: Única · Unic



8474887



8474850



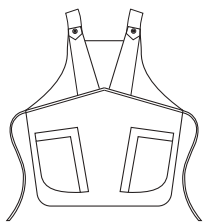
8474389



8474387







8157

Estola tejana con diseño geométrico con cintas. Texan stole with geometric design with ribbons.

775 Tejano · Denim

55% Pol./Poly. · 42% Algod./Cotton · 3% Elastano  
180 gr/m<sup>2</sup>



Largo/length: 82 cm  
Talla/Size: Única · Unic



8157775



8956

Estola tejana cruzada con bolsillos fruncidos. Crossed denim stole with gathered pockets.

497 Tejano · Denim

78% Pol./Poly. · 18% Rayon · 4% Elastano  
235 gr/m<sup>2</sup>



Largo/length: 84 cm  
Talla/Size: M-SG/M-XL



8956497



8959186



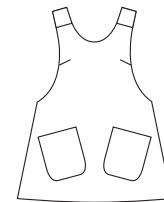
8959971



8959978



8959209



**8959**

Estola cruzada de cuadros.  
Cross plaid stole.

- 186 Morado · Purple
- 971 Pistachio · Pistachio
- 978 Azul · Blue
- 209 Gris · Grey

70% Alg./Poly ·  
30% Pol./Poly  
155 gr/m<sup>2</sup>

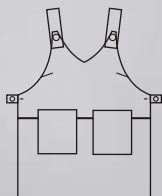


Largo/length: 84 cm  
Talla/Size: M-SG/M-XL



# COMERCIO

DISEÑOS ORIGINALES Y ACTUALES.  
SIÉNTETE ORGULLOSO DE LUCIRLOS  
EN TU NEGOCIO.



## 8076

Estola en loneta con botones.  
Canvas stole with buttons.

- 381 Marrón · Brown
- 382 Gris · Gray
- 383 Granate · Garnet
- 384 Azul · Blue
- 385 Verde · Green
- 386 Rosa · Pink

55% Algod./Cotton · 45% Pol./Poly  
185 gr/m<sup>2</sup>



Largo/length: 82 cm  
Talla/Size: Única · Unic



8076386



8076382



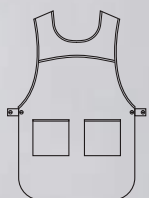








8468573



8468

Estola microfibra rayas con botones.  
Striped microfiber service stole with buttons.

- 572 Fucsia · Fuchsia
- 584 Gris · Gray
- 569 Beige · Beige
- 583 Azul marino · Navy blue
- 573 Pistacho · Pistachio

Microfibra (100% Pol.)  
150 gr/m<sup>2</sup>



Largo/length: 80 cm  
Talla/Size: Única · Unic



8468572



8468569

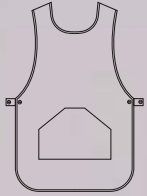
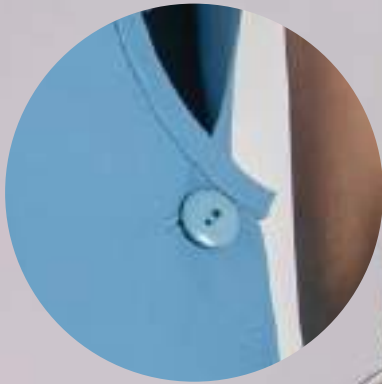


8468584



8468583





**8467**

Estola básica con botones.  
Basic stole with buttons.

**490** Azul denim · Denim blue  
Microfibra (100% Pol.)  
150 gr/m<sup>2</sup>



**568** Malva · Mallow  
Microfibra (100% Pol.)  
150 gr/m<sup>2</sup>



**700** Blanco · White  
65% Pol. Poly. · 35% Algod./Cotton  
195 gr/m<sup>2</sup>



**722** Granate · Garnet  
**725** Negro · Black  
100% Pol./Poly.  
165 gr/m<sup>2</sup>



Largo/length: 81 cm  
Talla/Size: Única · Unic



8467490



8467568



8467700

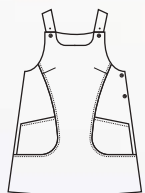


8467722



8467725





8198

Pichi multiservicio ajustable con corchetes. Adjustable multiservice jumpsuit with brackets.

775 Tejano · Denim

55% Pol./Poly. · 42% Algod./Cotton · 3% Elastano  
180 gr/m<sup>2</sup>



700 Blanco · White

65% Pol. Poly. · 35% Algod./Cotton  
195 gr/m<sup>2</sup>



709 Arena · Sand

721 Rojo · Red

725 Negro · Black

100% Pol. · Poly.

165 gr/m<sup>2</sup>



Largo/length: 83 cm

Talla/Size: SP-XG/ XS-XXXL



8198721



8198700



8198709



8198725



8198775





8819

8819571

Chaqueta caballero cremallera dorada. Men's jacket gold zipper.

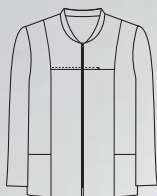
571 Negro · Black

Microfibra (100% Pol.)  
150 gr/m<sup>2</sup>



Largo/length: 75 cm

Talla/Size: SP-XG/ XS-XXXL



8828

8828571

Chaqueta mujer cremallera dorada. Woman's jacket gold zipper.

571 Negro · Black

Microfibra (100% Pol.)  
150 gr/m<sup>2</sup>



Largo/length: 75 cm

Talla/Size: SP-XG/ XS-XXXL





8253

Chaqueta unisex manga corta con corchetes. Unisex's short sleeves jacket with snap fasteners.

571 Negro · Black  
Microfibra (100% Pol.)  
150 gr/m<sup>2</sup>



725 Negro · Black  
100% Pol./Poly.  
165 gr/m<sup>2</sup>



Largo/length: 73 cm  
Talla/Size: SP-XG/ XS-XXXL



8254571



8253571



8253725



8254725



8254

Chaqueta unisex manga larga con corchetes. Unisex's long sleeves jacket with snap fasteners.

571 Negro · Black  
Microfibra (100% Pol.)  
150 gr/m<sup>2</sup>



725 Negro · Black  
100% Pol. · Poly.  
165 gr/m<sup>2</sup>



Largo/length: 73 cm  
Talla/Size: SP-XG/ XS-XXXL





8207725



**8207**

Chaqueta hombre manga corta, cuello mao. Men's jacket, short sleeves, mao collar.

**725 Negro** · Black  
100% Pol. · Poly.  
165 gr/m<sup>2</sup>



Largo/length: 76 cm  
Talla/Size: SP-XG/ XS-XXXL



8208725

**8208**

Chaqueta hombre manga larga, cuello mao. Men's jacket, long sleeves, mao collar.

**725 Negro** · Black  
100% Pol. · Poly.  
165 gr/m<sup>2</sup>



Largo/length: 76 cm  
Talla/Size: SP-XG/ XS-XXXL





8276829

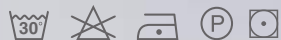
Patrón push up.  
Push-up pattern.



**8276**

Pantalón push up con talle bajo y trincha sin elástico.  
Push-up trousers with low waist and waistband without elastic.

**829** Blanco · White  
97% Pol./Poly. · 3% Elastan  
240 gr/m<sup>2</sup>



**830** Negro · Black  
94% Pol./Poly. · 6% Elastan  
225 gr/m<sup>2</sup>



Largo/length: 98 cm  
Talla/Size: 36-60



8276830



8056570

 **MICROFIBRA**



**8056**

Pantalón mujer con cintura baja y goma. Women's pants with low waist and elastic.

570 Blanco · White

571 Negro · Black

Microfibra (100% Pol.)

150 gr/m<sup>2</sup>



700 Blanco · White

65% Pol. Poly. · 35% Algod./Cotton

195 gr/m<sup>2</sup>



725 Negro · Black

100% Pol. · Poly.

165 gr/m<sup>2</sup>



Largo/length: 108 cm

Talla/Size: SP-XG/XS-XXXL



8056700



8056725



8056571





8280497

8280830



8280

Pantalón culotte de pernera ancha y corta. Culotte pants wide and short leg.

497 Tejano · Denim

78% Pol./Poly.  
18% Rayon  
4% Elastan  
235 gr/m<sup>2</sup>



830 Negro · Black

94% Pol./Poly. · 6% Spandex  
225 gr/m<sup>2</sup>



Largo/length: 82 cm

Talla/Size: SP-XG/XS-XXXL



8048570

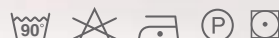


8048

Pantalón culotte de pernera ancha y corta con cremallera lateral. Culotte pants wide and short leg with side zipper.

570 Blanco · White

Microfibra (100% Pol.)  
150 gr/m<sup>2</sup>



Largo/length: 92 cm

Talla/Size: SP-XG/XS-XXXL

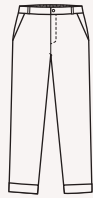




8219844

## 8219

Pantalón tobillero con cintura baja y goma atrás. Ankle pants with low-waisted and elastic rubber back.



844 Gris · Gray

841 Negro · Black

70% Algod./Cotton · 30% Pol. Poly.  
130 gr/m<sup>2</sup>



Largo/length: 91 cm

Talla/Size: SP-XG/XS-XXXL



8219841



8077725



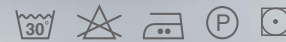
## 8077

Pantalón mujer con cinturilla plana y cremallera. Pants flat waist and zipper.

725 Negro · Black

100% Pol. Poly.

165 gr/m<sup>2</sup>



Largo/length: 108 cm

Talla/Size: SP-XG/XS-XXXL



9929491



9929

Pantalón unisex con cinturilla elástica y bolsillos. Unisex pants with elastic waistband and pockets.

491 Gris medio · Medium gray  
Microfibra (100% Pol.)  
150 gr/m<sup>2</sup>



570 Blanco · White  
Microfibra (100% Pol.)  
150 gr/m<sup>2</sup>



Largo/length: 108 cm  
Talla/Size: SP-XG/XS-XXXL



9929775



9929

Pantalón unisex con cinturilla elástica y bolsillos. Unisex trousers whit elastic waist and pockets.

775 Tejano · Denim  
55% Pol. Poly. · 42% Algod./Cotton  
3% Elastan  
180 gr/m<sup>2</sup>



Largo/length: 108 cm  
Talla/Size: SP-XG/XS-XXXL



8287

Pantalón mujer, dobladillo y raya marcada. Women's trousers with hem and marked crease.

700 Blanco · White  
67% Pol. Poly. · 33% Algod./Cotton  
195 gr/m<sup>2</sup>



725 Negro · Black  
100% Pol. · Poly.  
165 gr/m<sup>2</sup>



Largo/length: 98 cm  
Talla/Size: SP-XG/XS-XXXL



8287700



8287725

www.dyneke.com

8525725



8525

Pantalón cinturilla plana y goma en laterales y espalda. Flat waistband trousers with elastic on the sides and back.

725 Negro · Black



100% Pol. · Poly.  
165 gr/m<sup>2</sup>

Largo/length: 102 cm  
Talla/Size: SP-XG/XS-XXXL





8061700



8061

Bermudas con bolsillos y cintura de gomilla. Bermuda shorts with pockets and elasticated waist.

700 Blanco · White

65% Pol. Poly. · 35% Algod./Cotton  
195 gr/m<sup>2</sup>



Largo/length: 52 cm  
Talla/Size: SP-XG/XS-XXXX



8062700



8062

Pantalón pirata con cintura elástica en la parte posterior. Cropped pants with elastic waist at the back.

700 Blanco · White

67% Pol. Poly. · 33% Algod./Cotton  
195 gr/m<sup>2</sup>



Largo/length: 78 cm  
Talla/Size: SP-XG/XS-XXXX





9929725

9929

Pantalón unisex con bolsillos y cinturilla con goma. Unisex pants with pockets and elastic waistband.

**900** Blanco · White  
67% Pol. Poly. · 33% Algod./Cotton  
195 gr/m<sup>2</sup>  
Talla/Size: 36-62



**725** Negro · Black  
100% Pol. · Poly.  
165 gr/m<sup>2</sup>  
Talla/Size: SP-XG/XS-XXXL



Largo/length: 108 cm



9929900



8201700

8201

Pantalón sin bolsillos con cinturilla elástica. Pants without pockets with elastic waistband.

**700** Blanco · White  
65% Pol. Poly. · 35% Algod./Cotton  
195 gr/m<sup>2</sup>  
Talla/Size: 36-62



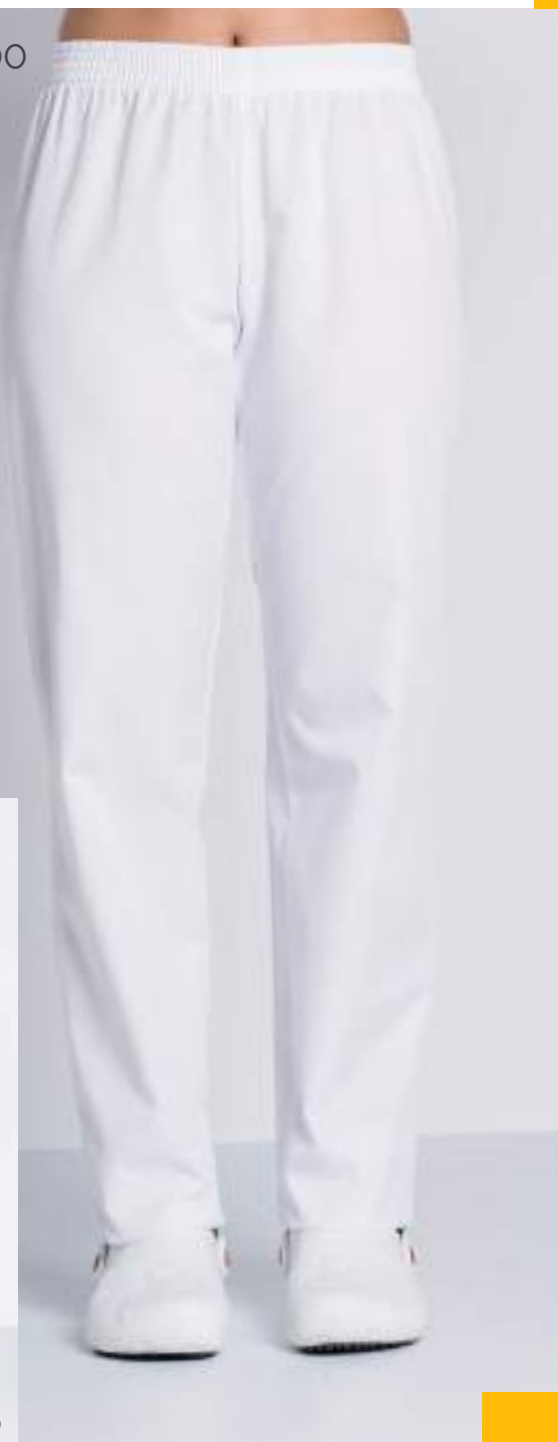
**725** Negro · Black  
100% Pol. · Poly.  
165 gr/m<sup>2</sup>  
Talla/Size: SP-XG/XS-XXXL



Largo/length: 105 cm



8201725



8540571

 MICROFIBRA



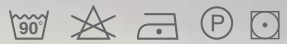
### 8540

Pantalón con bolsillos laterales abrochado con cordón. Pants with side pockets fastened with drawstring.

701 Negro · Black  
65% Pol. Poly. · 35% Algod./Cotton  
195 gr/m<sup>2</sup>



571 Negro · Black  
Microfibra (100% Pol.)  
150 gr/m<sup>2</sup>



Largo/length: 110 cm  
Talla/Size: SP-XG/XS-XXXL



**DNK**

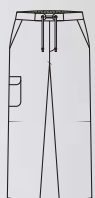




8540701



8542701

**8542**

Pantalón caballero trinchas con cintas. Men's pants with drawstring elastic waist.

701 Negro · Black  
65% Pol. Poly. · 35% Algod./Cotton  
195 gr/m<sup>2</sup>



Largo/length: 107 cm  
Talla/Size: SP-XG/XS-XXXL

8485701

**8485**

Pantalón caballero con cremallera. Men's pants with zipper.

701 Negro · Black

65% Pol. Poly. · 35% Algod./Cotton  
195 gr/m<sup>2</sup>

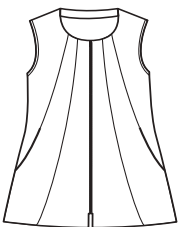


Largo/length: 113 cm  
Talla/Size: SP-XG/XS-XXXL

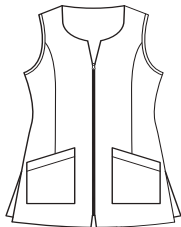


# ÍNDICE GRÁFICO

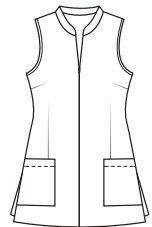
8269 pág. 12



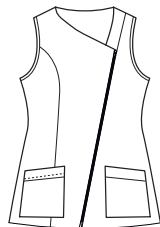
8292 pág. 14



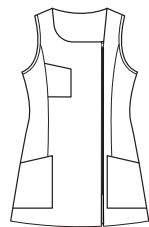
8069 pág. 15



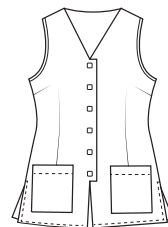
8067 pág. 16



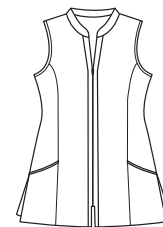
8053 pág. 17



8068 pág. 18



8160 pág. 19



8050 pág. 20



8059 pág. 21



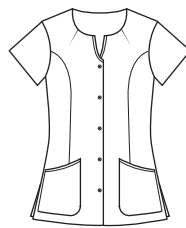
8274 pág. 21



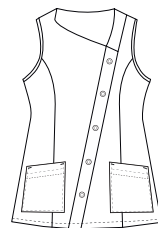
8270 pág. 22



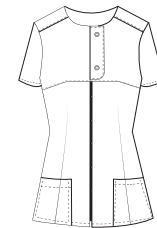
8673 pág. 22



8041 pág. 23



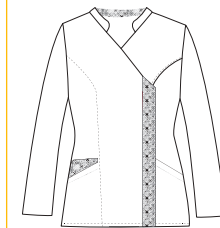
8065 pág. 24



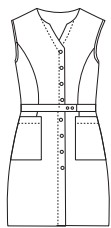
8051 pág. 25



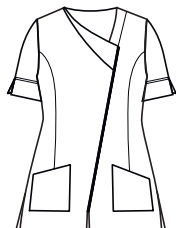
8066 pág. 25



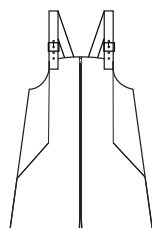
8093 pág. 26



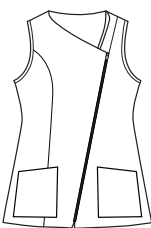
8081 pág. 27



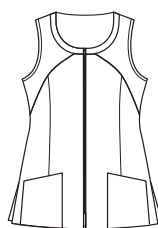
8136 pág. 28



8698 pág. 29



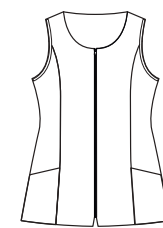
8601 pág. 29



8632 pág. 30



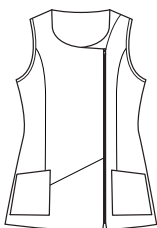
8610 pág. 31



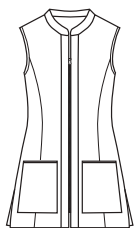
8699 pág. 31



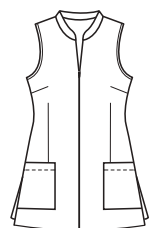
8638 pág. 32



8162 pág. 33



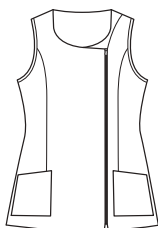
8602 pág. 33



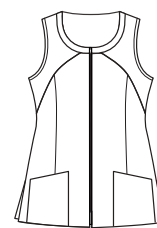
8696 pág. 34



8639 pág. 34



8034 pág. 35



8035 pág. 35



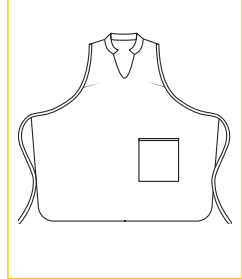
8648 pág. 36



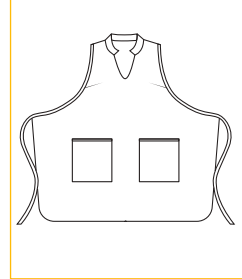
8161 pág. 36



8605 pág. 37



8156 pág. 37



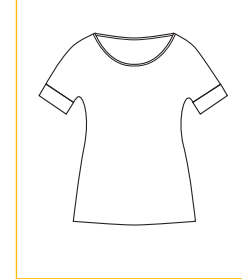
8113 pág. 38



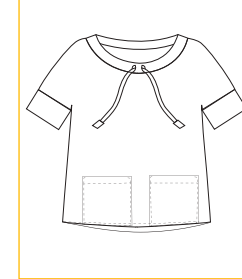
8115 pág. 39



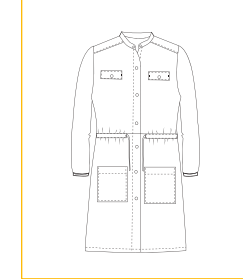
8116 pág. 39



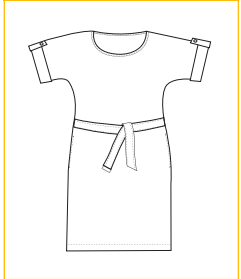
8117 pág. 39



8109 pág. 40



8114 pág. 40



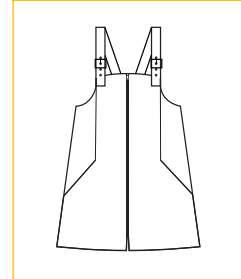
8047 pág. 41



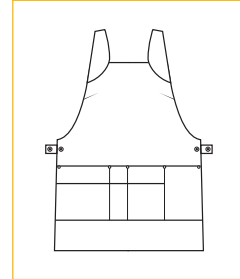
8279 pág. 41



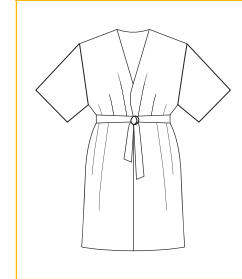
8110 pág. 42



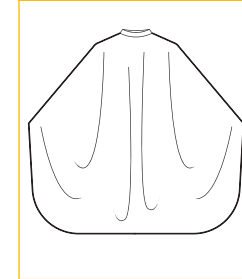
8111 pág. 42



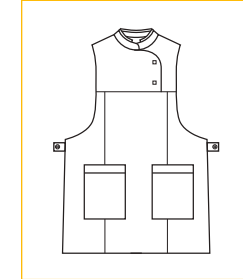
8101 pág. 43



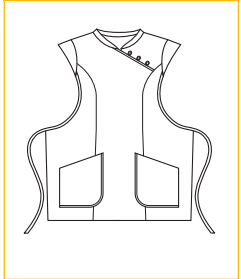
8102 pág. 43



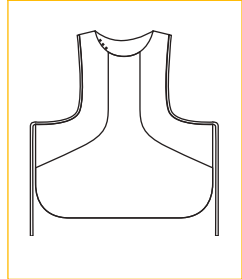
8159 pág. 44



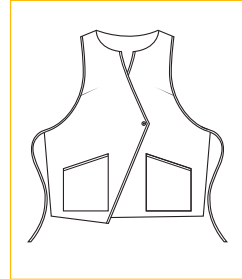
8470 pág. 45



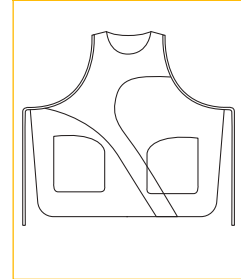
8158 pág. 46



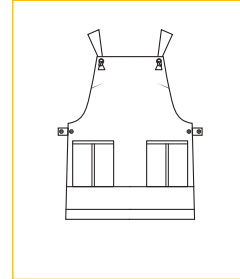
8480 pág. 47



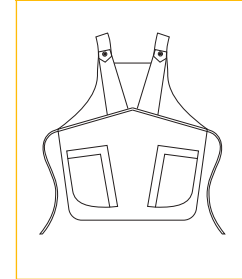
8025 pág. 48



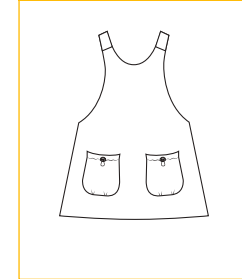
8474 pág. 49



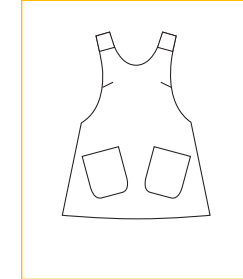
8157 pág. 50



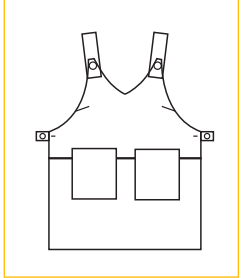
8956 pág. 50



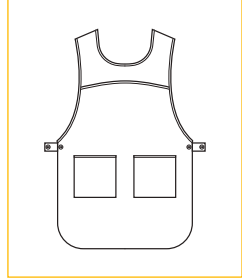
8959 pág. 51



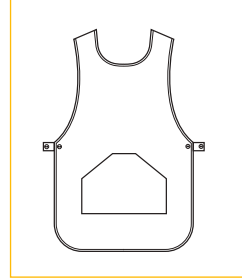
8076 pág. 52



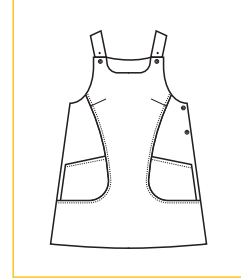
8468 pág. 54



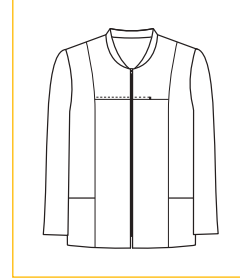
8467 pág. 55



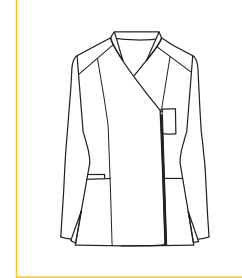
8198 pág. 56



8819 pág. 57



8828 pág. 57



8253 pág. 58



8254 pág. 58





# ÍNDICE GRÁFICO

8207 pág. 59



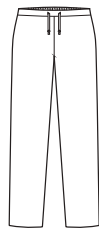
8208 pág. 59



8276 pág. 60



8056 pág. 61



8280 pág. 62



8048 pág. 62



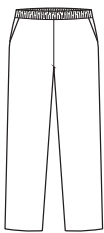
8219 pág. 63



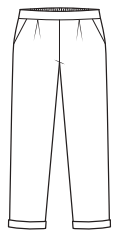
8077 pág. 63



9929 pág. 64/67



8287 pág. 65



8525 pág. 65



8061 pág. 66



8062 pág. 66



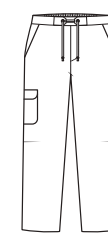
8201 pág. 67



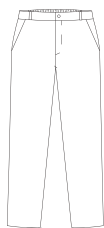
8540 pág. 68



8542 pág. 69



8485 pág. 69



# GUÍA DE TALLAS

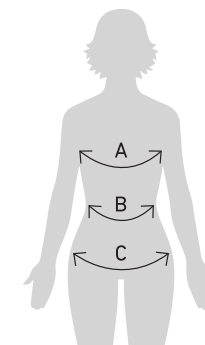
## Guía de tallaje mujer

### Women measurement guide

- A Perímetro pecho / Chest contour
- B Perímetro cintura / Waist contour
- C Perímetro cadera / Hip contour

Casacas, Pichis y Prendas Unisex / Tunics Jumper dress and unisex clothing.

	SP		P		M		G		SG		SSG		XG	
	36	38	40	42	44	46	48	50	52	54	56	58	60	62
<b>Pecho</b> Chest	80	84	88	92	96	100	104	108	112	116	120	124	128	132
<b>Cadera</b> Hip	88	92	96	100	104	108	112	116	120	124	128	132	136	140



Pantalones Mujer y Pantalones Unisex / Woman trousers and unisex trousers.

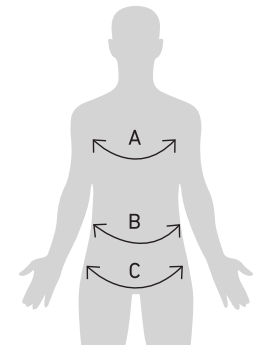
	SP		P		M		G		SG		SSG		XG	
	36	38	40	42	44	46	48	50	52	54	56	58	60	62
<b>Cintura</b> Waist	64	68	72	76	80	84	88	92	96	100	104	108	112	116
<b>Cadera</b> Hip	90	94	98	102	106	110	114	118	122	126	130	134	138	142

## Guía de tallaje hombre Men measurement guide

- A Perímetro pecho / Chest contour
- B Perímetro cintura / Waist contour
- C Perímetro cadera / Hip contour

### Casacas / Tunics.

	SP	P	M	G	SG	SSG	XG
	42-44	46-48	50-52	54-56	58-60	62-64	66-68
<b>Pecho</b> Chest	84-90	92-98	100-106	108-114	116-122	124-130	132-138
<b>Cadera</b> Hip	82-88	90-96	98-104	106-112	114-120	122-128	130-136



### Pantalones Hombre / Man trousers.

	SP		P		M		G		SG		SSG		XG	
	36	38	40	42	44	46	48	50	52	54	56	58	60	62
<b>Cintura</b> Waist	70	74	78	82	86	90	94	98	102	106	110	114	118	122
<b>Cadera</b> Hip	82	86	90	94	98	102	106	110	114	118	122	126	130	134



# LEYENDA/ SIMBOLOGÍA

## Tecnología de nuestros tejidos y sus propiedades.

Dyneke apuesta por la innovación tanto en sus diseños como en los materiales que se incorporan en nuestras prendas, de esta forma obtenemos unos resultados garantizables en cuanto a comodidad y resistencia.

## Technology of our tissues and their properties.

Dyneke is committed to innovation both in its designs and in the materials that are incorporated in our garments, in this way we obtain a guaranteed results in terms of comfort and resistance.



Rejilla transpirable  
y elástica/ Breathable  
and elastic mesh.



Extraconfort, suave al  
tacto/ Extra comfort,  
soft touch



Iones de plata, antiolor,  
antibacteriana/  
Silver ions, anti-odor,  
antibacterial.



Hidrofugado,  
repele líquidos/  
Water-repellent.



Tejido elástico/  
Elastic fabric.



Cierre con cremallera/  
Zipper closure.



Cierre con botón/  
Button closure.



Cierre con corchete  
redondo/ Square  
clasp closure.



Cierre con corchete  
cuadrado/ Square  
clasp closure.



Cierre con lazo/  
Bow closure.



Tejido rico en algodón/  
Cotton-rich fabric.



Tejido denim, tejano/  
Denim fabric.

**DNK**  
**DYNEKE**

DYNEKE



¡Descarga  
el catálogo completo  
en tu dispositivo móvil!



<sup>DNK</sup>  
**DYNEKE**

CONFECCIONES DYNEKE · Herois del Bruc, 9 · 08784 Piera · Tel: 93778 90 83 · WWW.DYNEKE.COM

